

# Service Manual

## Refrigerator

**NR-B37M1, NR-B37MA1**

**NR-B41M1, NR-B41MA1**

**NR-B361M, NR-B401M**

**Product Color**

Silver (S)

**Destination**

Thailand, Hong Kong, Singapore, Malaysia, UAE,  
Saudi Arabia, Kuwait, Qatar and etc.



CFCs have been used in refrigerant as refrigerator and the insulation materials for many yeas. But it is now known that these compounds which once seemed so ideal for use as cleaning agents and in refrigeration systems, destroy the earth's ozone layer as a result, an international body decided on a total worldwide ban of harmful CFCs by the end of 1995.

### **⚠ WARNING**

This service information is designed for experienced repair technicians only and is not designed for use by the general public. It does not contain warnings or cautions to advise non-technical individuals of potential dangers in attempting to service a product. Products powered by electricity should be serviced or repaired only by experienced professional technicians. Any attempt to service or repair the product or products dealt with in this service information by anyone else could result in serious injury or death.

### **IMPORTANT SAFETY NOTICE**

There are special components used in this equipment which are important for safety. These parts are marked by ⚠ in the Schematic Diagrams, Circuit Board Diagrams, Exploded Views and Replacement Parts List. It is essential that these critical parts should be replaced with manufacturer's specified parts to prevent shock, fire or other hazards. Do not modify the original design without permission of manufacturer.







# Panasonic®

© 2006 Panasonic Home Appliances (Thailand) Co., Ltd.  
All rights reserved. Unauthorized copying and distribution is a violation of law.







# 1 Safety Cautions for Repairing

When you repair refrigerator, please kindly take care of following cautions.

## a) Warning

	<p><b>Before repairing unit, unplug supply cord</b></p> <ul style="list-style-type: none"> <li>• Before you repair refrigerator, unplug the supply cord.</li> </ul>
	<p><b>Use authentic parts when repairing</b></p> <ul style="list-style-type: none"> <li>• When you replace the parts, please use authentic parts to replace defective parts.</li> </ul>
	<p><b>Caution during brazing</b></p> <ul style="list-style-type: none"> <li>• When you use touch for brazing, please ensure ventilation. Otherwise, you will be poisoned by carbon monoxide.</li> </ul>
	<p><b>Pay attention to using refrigerant</b></p> <ul style="list-style-type: none"> <li>• If refrigerant touches fire, the gas becomes poisonous gas.</li> </ul>
	<p><b>Pay attention to getting electricity shock</b></p> <ul style="list-style-type: none"> <li>• When you check the voltage of terminal, please do not touch the electricity parts terminal.</li> <li>• When you replace the parts, please wait three minutes at least for discharging capacitor.</li> </ul>
	<p><b>Check safety after repairing</b></p> <ul style="list-style-type: none"> <li>• Check the screws, parts, lead wires to take in place.</li> <li>• And check the repairing portion whether circumferential parts is damaged or not.</li> <li>• Check insulation resistance between supply plug and earth.</li> <li>• When install refrigerator, check condition of supply cord and plug</li> <li>• Wipe off the dust on plug.</li> </ul>

## b) Caution

	<p><b>Watch the hot parts</b></p> <ul style="list-style-type: none"> <li>• During operation and after operation, compressor and pipes are hot.</li> <li>• Also, under these condition, heater are hot.</li> <li>• Do not burn your fingers when you touch it.</li> </ul>
	<p><b>Pat attention to refrigerant</b></p> <ul style="list-style-type: none"> <li>• Do not touch liquid refrigerant.</li> <li>• Otherwise, your hands may be burnt.</li> </ul>
	<p><b>Pay attention to edge of parts</b></p> <ul style="list-style-type: none"> <li>• Otherwise, your fingers may be cut.</li> </ul>
	<p><b>Pay attention to fins of evaporator and condenser</b></p> <ul style="list-style-type: none"> <li>• Otherwise, your fingers may be cut.</li> </ul>
	<p><b>Before transportation, adjust adjustable bolt</b></p> <ul style="list-style-type: none"> <li>• Otherwise, the floor may be damaged.</li> </ul>
	<p><b>Do not touch the pipe after brazing</b></p> <ul style="list-style-type: none"> <li>• Otherwise, your hands may be burnt.</li> </ul>

## 2 Specification and Components

Destination	Thailand				Hong Kong, Singapore Malaysia, Mid asia	
Model	NR-B37M1	NR-B37MA1	NR-B41M1	NR-B41MA1	NR-B361M	NR-B401M
Plug	A2P				Hong Kong, Singapore, Malaysia: S3P Saudi, Gulf: S3D UAE: C2P	
Power Source	220VAC 50Hz				Hong Kong: AC220V, 50Hz Singapore, Malaysia: AC240V, 50Hz Saudi: AC220V 50Hz UAE, Gulf: AC220V/240V 50Hz	

### Specification

Capacity	355 L (FC: 102L, PC: 253L)	352 L (FC: 100L, PC: 252L)	395 L (FC: 102L, PC: 293L)	392 L (FC: 100L, PC: 292L)	355 L (FC: 102L, PC: 253L)	395 L (FC: 102L, PC: 293L)
Dimensions External	Width (mm)	675				
	Depth (mm)	695				
	Height (mm)	1,629	1,769		1,629	1,769
Net Weight (Kg)	69	72	72	75	69	72
Freezer star rating	4 Stars rating					
Temperature control	FC: Thermostat		FC: Electronic control (PCB)		FC: Thermostat	
	PC: Baffle damper thermostat			PC: Baffle damper thermostat		
Defrosting	Full-automatic heater defrost with a timer					
Freezer star rating	Full-automatic heater (forcibly evaporated into the air)					
Exterior finish (Cabinet / door)	PCM color / PCM color					
Inner Liner	Vacuum formed ABS resin					
Insulation	Polyurethane foam (cabinet and door)					

### Sealed Unit

Compressor (Winding resistance at 20 °C)	DG77C14RAW5 for except Saudi, QB91C24GAX0 for Saudi Main: 11.0 ohms, Aux: 13.1 ohms
Evaporator	Fin Tube type
Condenser	Wrapper type (concealed condenser)
Refrigerant charge	HFC-134a,
Oil charge	280ml (freol α-10)

### Electric Parts

Thermostat	MM1-9012	Electronic PCB	MM1-9012	Electronic PCB	MM1-9012	
Baffle damper thermostat	MM1-6180					
PC heater	Resistance Wire Vinyl Covered Heater 3.14W/220, 3.22W/M, 15421 ohms					
Door switch	MM7-331(F) 250V/0.15A	D3D-121 250V/0.5A	MM7-331(F) 250V/0.15A	D3D-121 250V/0.5A	MM7-331(F) 250V/0.15A	MM7-331(F) 250V/0.15A
Fan motor	DC9V/1.53W	DC14V/1.54W	DC9V/1.53W	DC14V/1.54W	DC9V/1.53W	DC9V/1.53W
Fan blade	Ø 90 mm. PROP FAN ( BOX TYPE)					
Lamp bulb	E14 / 22, 240V /15W					
PTC relay	PTH7M330MD2					
Defrost timer	NT0704M2MC Cycle: 7 hours 16 min, waiting time: 4 min / 50Hz	Electronic PCB control	NT0704M2MC Cycle: 7 hours 16 min, waiting time: 4 min / 50Hz	Electronic PCB control	NT0704M2MC Cycle: 7 hours 16 min, waiting time: 4 min / 50Hz	
Defrost heater	Radiant Heater MM6-4343 240V/183W					
Motor protector	5TM232NHBY for except Saudi, 5TM743NFBYY for Saudi					
Running capacitor	4µF-400V for except Saudi, No use for Saudi					
Bimetal thermostat	-5°C/13°C 250V/10A	PTC	-5°C/13°C 250V/10A	PTC	-5°C/13°C 250V/10A	
Temperature fuse	250V/10A/73°C	250V/10A/73°C 250/10A/94°C	250V/10A/73°C	250V/10A/73°C 250/10A/94°C	250V/10A/73°C	

\* Specification subjects to change without notice

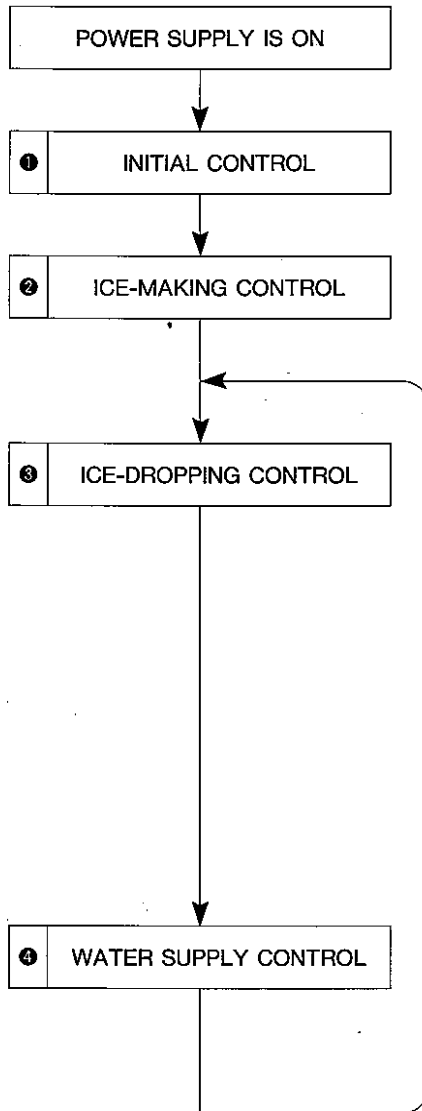
# ■AUTOMATIC ICE-MAKER For NR-B37MA1 and NR-B41MA1

## ●General operation

Water in the tank is supplied to ice tray through the hose by the pump motor.

After ice-making is completed, ice tray is twisted by the movement of ice-drop motor and ice cubes drops to the ice server.

## ●Flow-chart of ice-making



When refrigerator is plugged in, it makes ice tray set at horizontal position.

Ice tray is cooled to make ice cubes. After a certain period, temperature of ice tray is checked by ice temperature sensor.

When it is lower than  $-12^{\circ}\text{C}$ , ice-making operation is completed.

Ice tray starts turning as soon as ice-detector lever moves downward to check the amount of ice in the ice server.

When the amount of ice stored is short, ice tray turns counter-clockwise until it strikes on the stopper, and it is twisted and ice cubes drops to the ice server.

Then ice tray returns to horizontal position by turning clockwise.

※When ice-detector lever concludes the amount of ice store to be enough,

ice tray starts turning in reverse as soon as ice-detector lever moves upward and ice-dropping operation stops. Every 60 minutes later, ice-detector lever moves downward to check the amount of ice stored.

※Ice-dropping control will not start while door is opened. In case that door is opened during ice-dropping operation, ice-dropping operation temporarily stops. After door is closed, it starts again.

Water is not supplied to ice tray until it has passed more than 3 minutes, after water-supply tank was properly set while TANK lamp is OFF state.

Pump motor rotates for approx. 5 seconds to supply water to ice tray. Then it rotates in reverse for approx. 3 seconds so that water remaining in the water-supply hose can return to the tank.

※7 minutes after water-supply operation, temperature of ice tray is checked by ice temperature sensor.

If it is lower than a prescribed temperature, TANK lamp comes ON.

Because it concludes the amount of water in tray to be short.

If it is higher than a prescribed temperature, it proceeds to ice-making control.

## ● MECHANISM OF AUTOMATIC ICE-MAKING

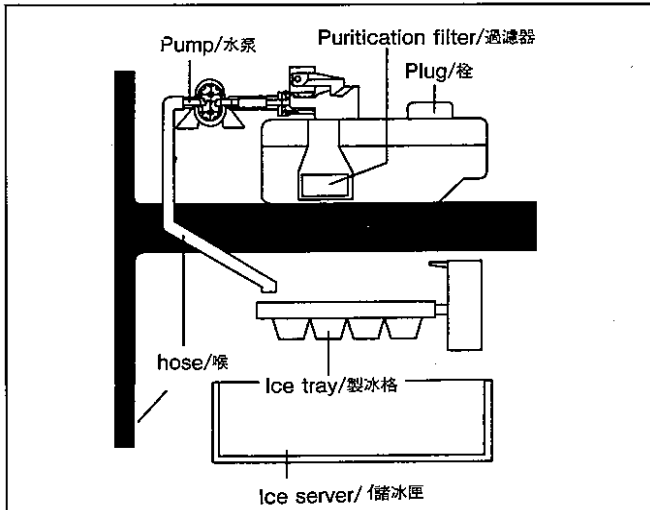
### [1] WATER IS SUPPLIED

#### Condition

- At least 3 minutes after tank is properly set.
- TANK lamp is OFF.

Water is supplied to ice tray by rotation of pump motor.

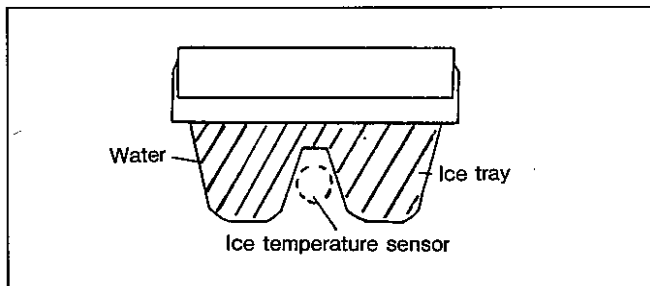
Then pump motor rotates in reverse so that remaining water in the hose can return to the tank.



### [2] WATER-SUPPLY IS CHECKED

7 minutes after water-supply operation, ice temp. sensor checks the temperature of ice tray.

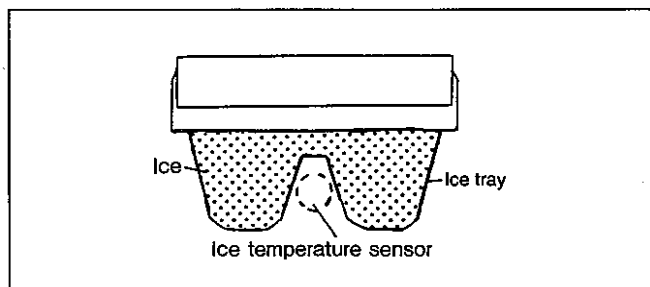
When it is higher than a prescribed temperature, it proceeds to ice-making operation.



### [3] ICE-MAKING STARTS

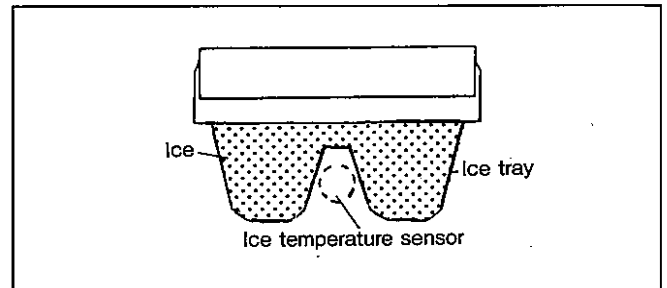
### [4] ICE-MAKING IS CHECKED

Later, ice temp. sensor checks the temperature of ice tray. When it is lower than a prescribed temperature(1st temperature check), cooling operation proceeds to next stage.



### [5] ICE-MAKING IS COMPLETED

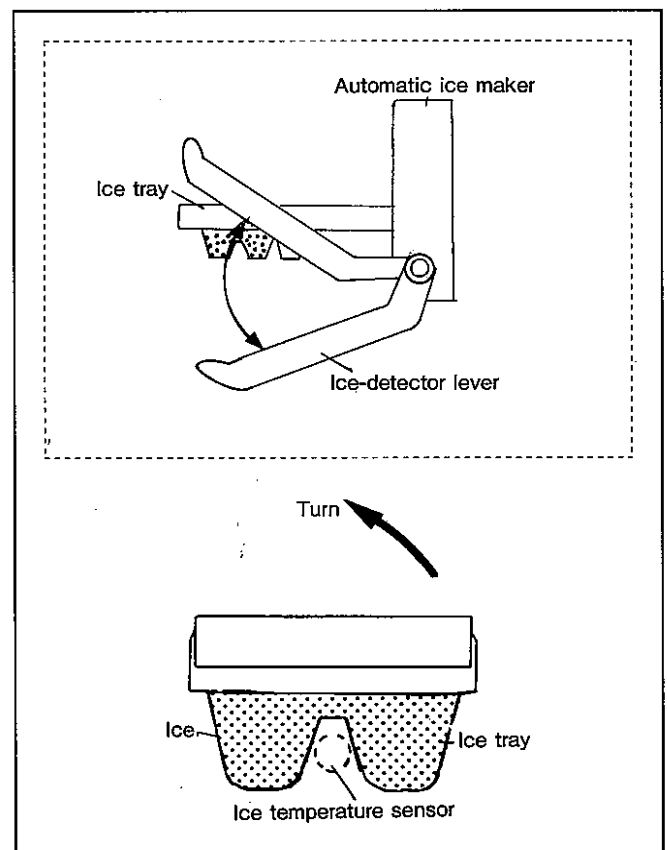
10 minutes later, ice temp. sensor checks the temperature of ice tray again. When it is lower than a prescribed temperature(2nd temperature check), ice-making is completed.



### [6] AMOUNT OF ICE STORED IS CHECKED AND ICE IS DETACHED FROM TRAY(STEP 1)

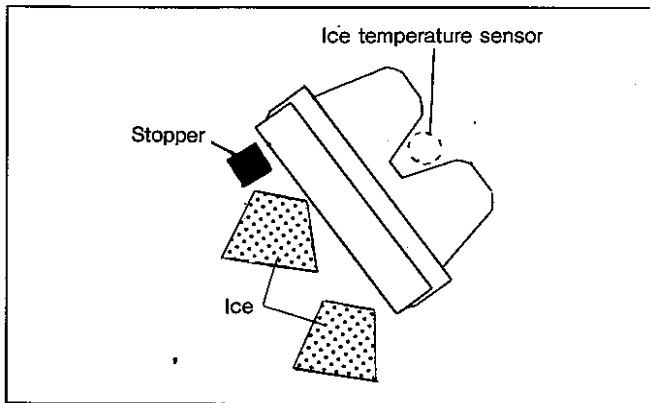
Ice tray turns counter-clockwise as soon as ice-detector moves downward to check the amount of ice stored.

When the amount of ice stored is short, ice tray continues to turn counter-clockwise.



### [7] ICE IS DETACHED FROM TRAY(STEP 2)

When ice tray strikes on the the stopper, it is twisted and ice cubes drops to ice server.



### IMPORTANT

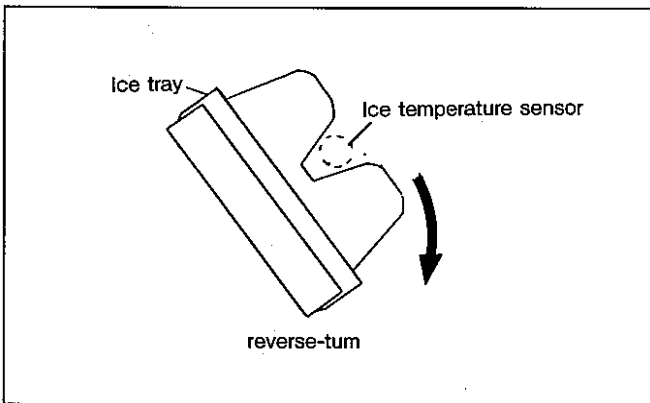
ICE SERVER WILL NEVER BECOME FULL OF ICE CUBES BECAUSE OF ITS STRUCTURE.

### FOR PROPER DETECTION OF AMOUNT OF ICE STORED

- \* Level ice cubes.
- \* Put ice shovel in place.
- \* Do not put into frozen foods and ice cream in ice server.

### [8] ICE IS DETACHED FROM TRAY(STEP 3)

Ice tray starts turning clockwise(reverse-turn)and stops at horizontal position. Then pump motor stops rotating.



### OPERATION JUST AFTER INSTALLATION

- ①Water is not supplied to ice tray as soon as refrigerator is plugged in.
- ②About 2 hours later, ice temperature sensor checks the temperature of ice tray. When it is lower than  $-12^{\circ}\text{C}$ , ice-dropping operation starts and ice tray is twisted. At this time, there is no water in the tray.
- ③Then water is supplied to ice tray initially. Now 1st ice-making operation is ready.

### TEST SWITCH

Test function is available to check ice-maker.

Test switch is located at the bottom of ice-maker.

When test switch is pressed,

- (1)both ice-dropping control and water-supply control will start, even if door is opened.
- (2)ICE-MAKING OFF-TIMER will be cancelled and its lamp comes off.

### NOTE

While ICE-MAKER PROTECT CONTROL is ON, test function will not operate. ICE-MAKER PROTECT CONTROL is to stop ice-maker completely if neither ice-detector lever nor ice tray operate properly.

### 3. Performance Data

#### 3.1 NR-B37M1 and NR-B37MA1

Thermostat Dial Setting		"5"	"3"	"1"
Freezer Temperature	(°C)	-14.5 or lower	-8.0 or lower	-2.0 or lower
Fresh Food Compartment Temperature	(°C)	-4.0 ± 2.5	1.0 ± 2.5	6.5 ± 2.5
Running Ratio	(%)	60 ± 15	40 ± 15	25 ± 15
Power Consumption	(kWh/Day)		1.2	

#### 3.2 NR-B41M1 and NR-B41MA1

Thermostat Dial Setting		"5"	"3"	"1"
Freezer Temperature	(°C)	-14.5 or lower	-7.5 or lower	-2.0 or lower
Fresh Food Compartment Temperature	(°C)	-4.0 ± 2.5	1.0 ± 2.5	6.5 ± 2.5
Running Ratio	(%)	70 ± 15	40 ± 15	25 ± 15
Power Consumption	(kWh/Day)		1.2	

#### 3.3 NR-B361M

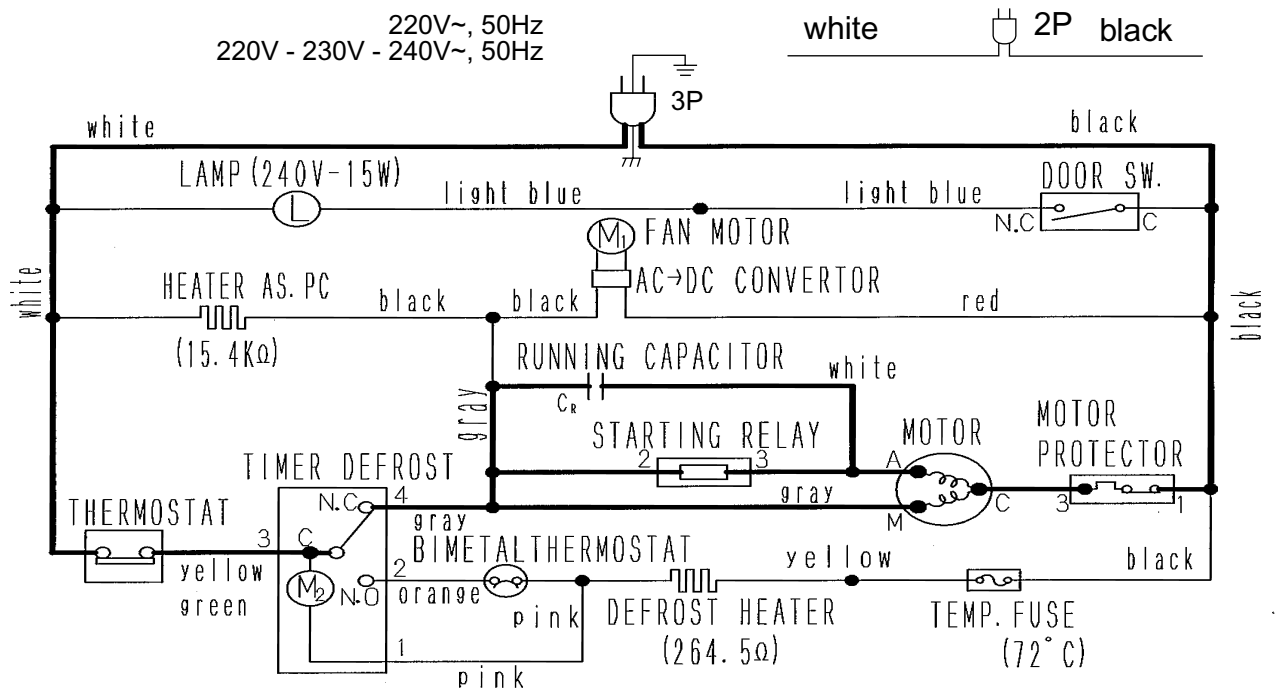
Thermostat Dial Setting		"5"	"3"	"1"
Freezer Temperature	(°C)	-15.5 or lower	-8.0 or lower	-4.0 or lower
Fresh Food Compartment Temperature	(°C)	-2.0 ± 2.5	2.5 ± 2.5	8.0 ± 2.5
Running Ratio	(%)	70 ± 15	35 ± 15	20 ± 15
Power Consumption	(kWh/Day)		1.2	

#### 3.4 NR-B401M

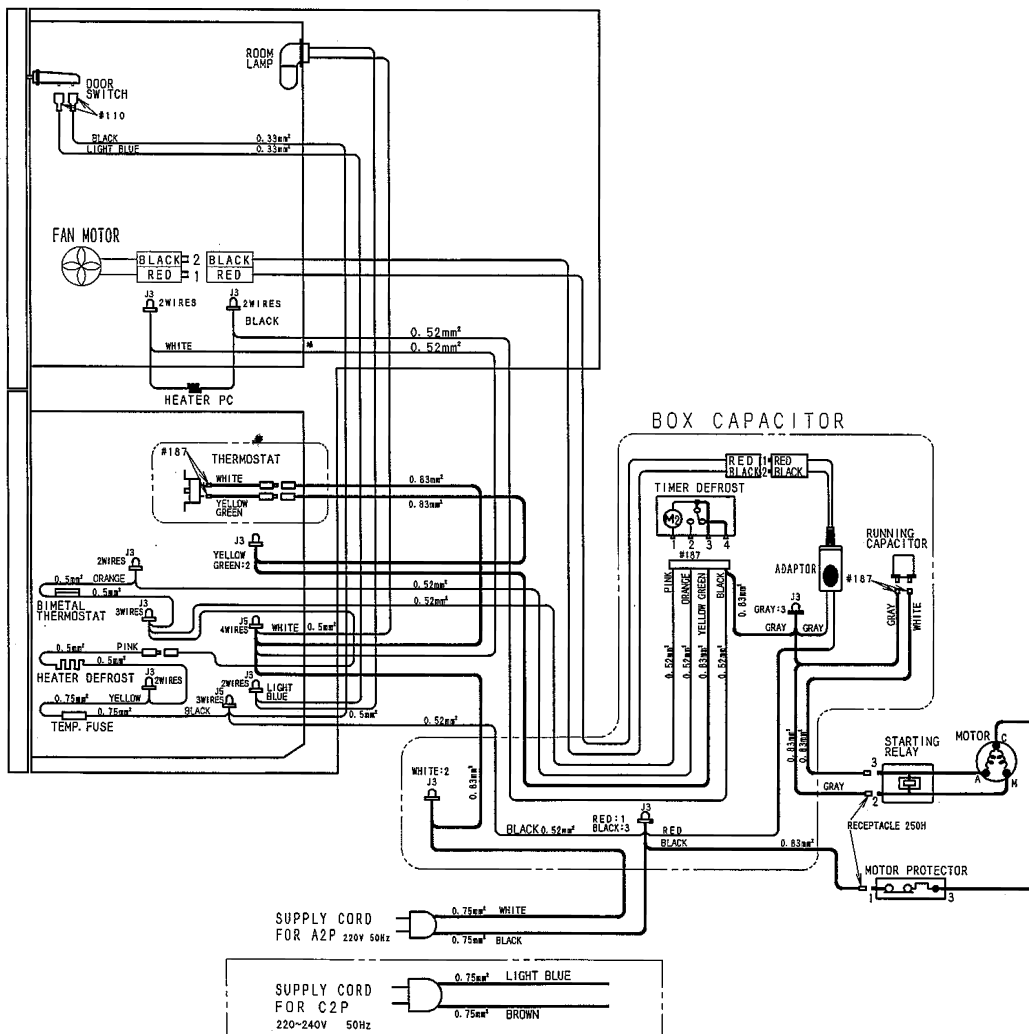
Thermostat Dial Setting		"5"	"3"	"1"
Freezer Temperature	(°C)	-15.5 or lower	-8.0 or lower	-4.0 or lower
Fresh Food Compartment Temperature	(°C)	-2.0 ± 2.5	2.5 ± 2.5	8.0 ± 2.5
Running Ratio	(%)	70 ± 15	35 ± 15	20 ± 15
Power Consumption	(kWh/Day)		1.2	

# 4. Schematic Diagram

## 4.1. NR-B37M1, NR-B41M1, NR-B361M and NR-B401M

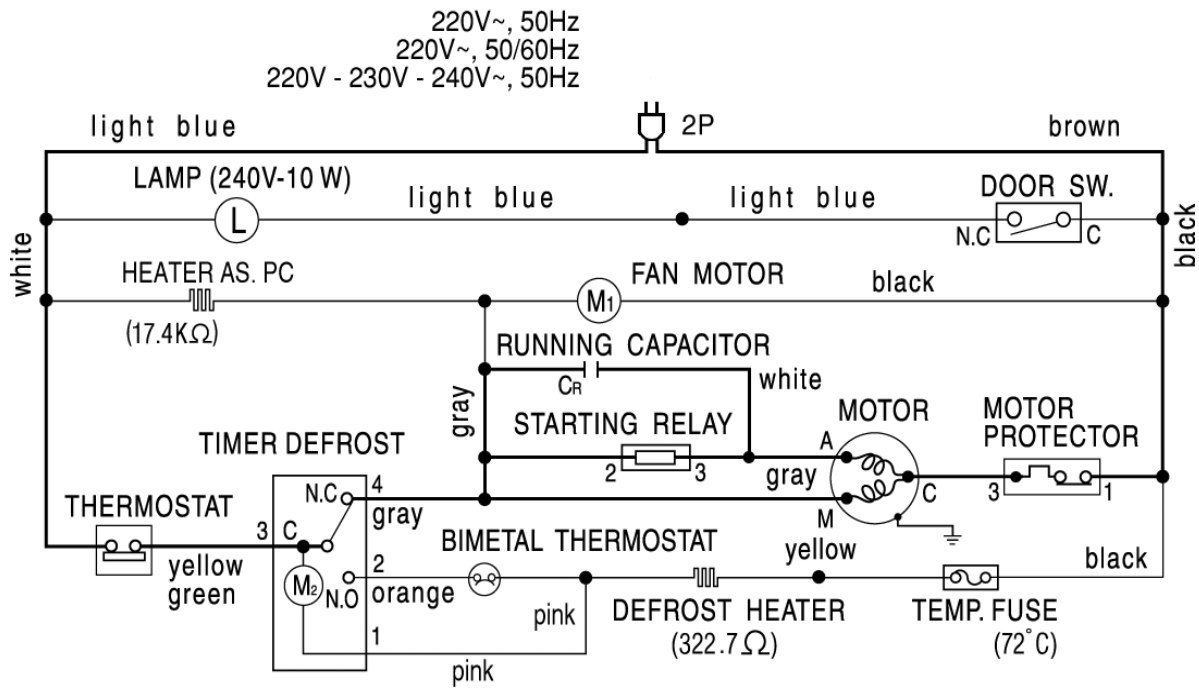


Wiring Connection Diagram

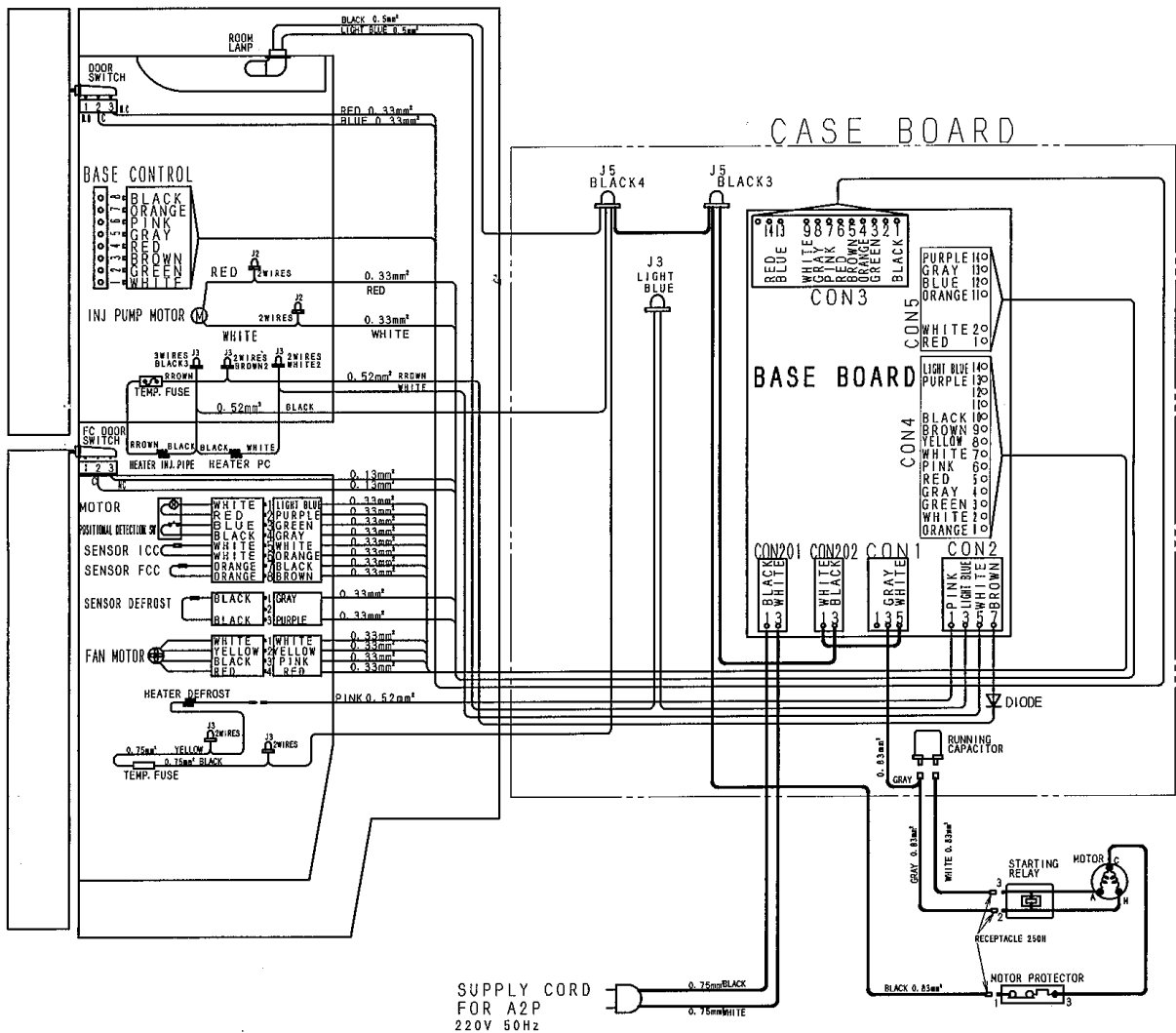




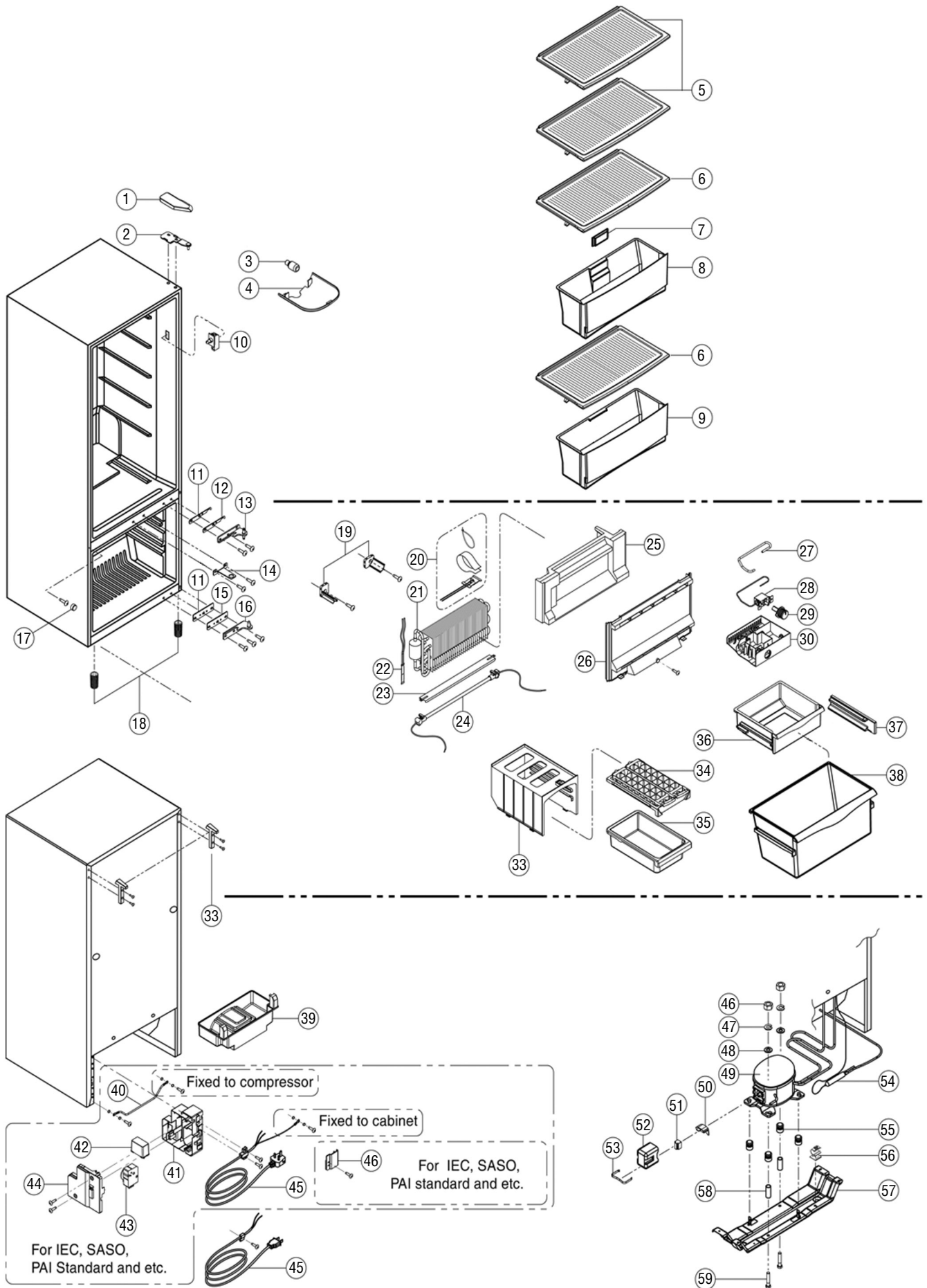
## 4.2. NR-B37MA1 and NR-B41MA1

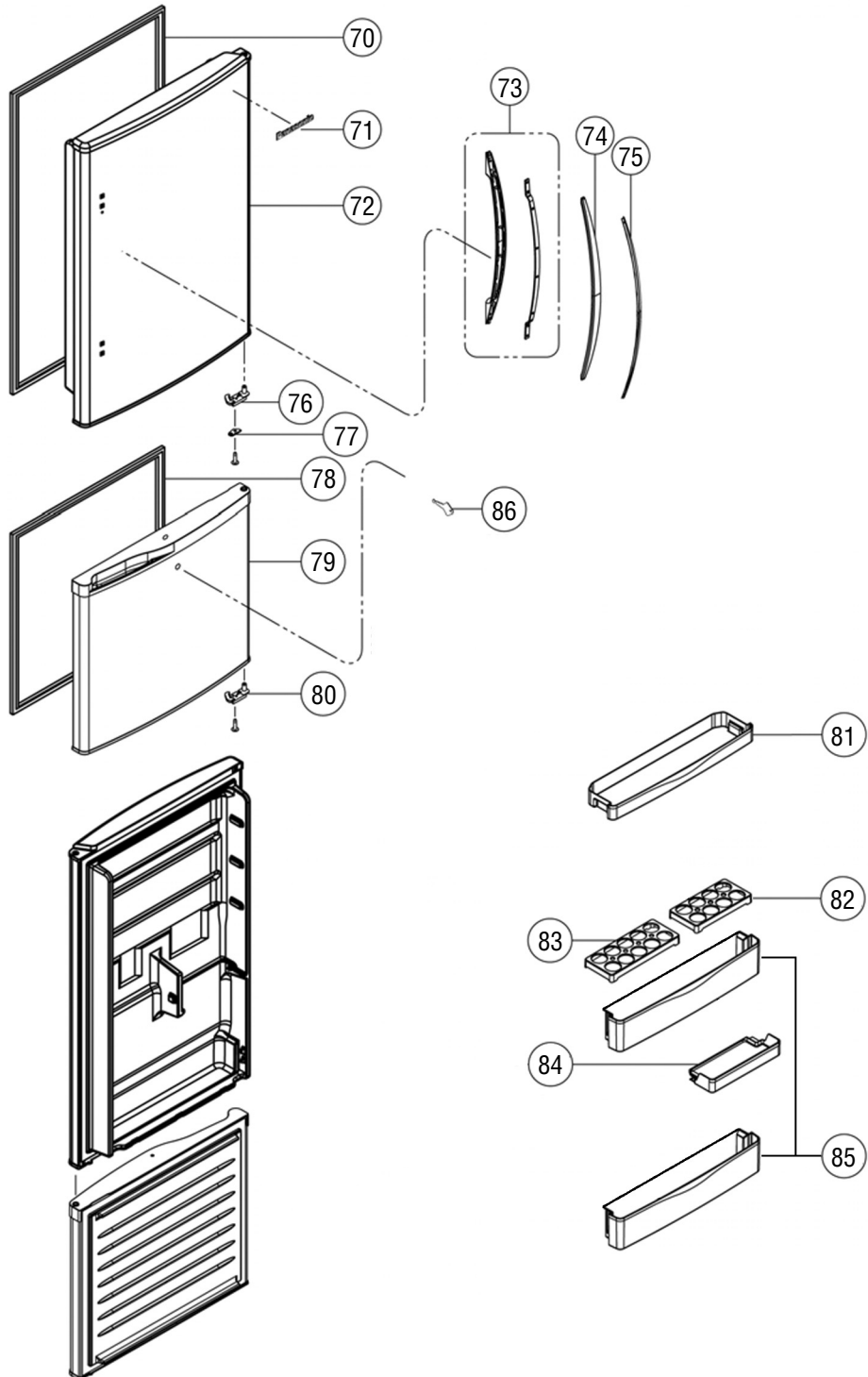
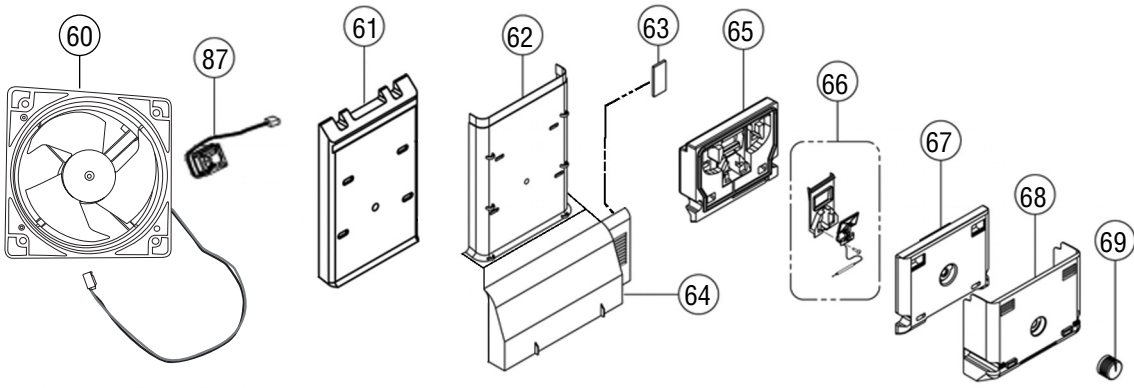


Wiring Connection Diagram



# 6 Parts Location and Parts list of NR-B37M1, NR-B41M1, NR-B361M and NR-B401M





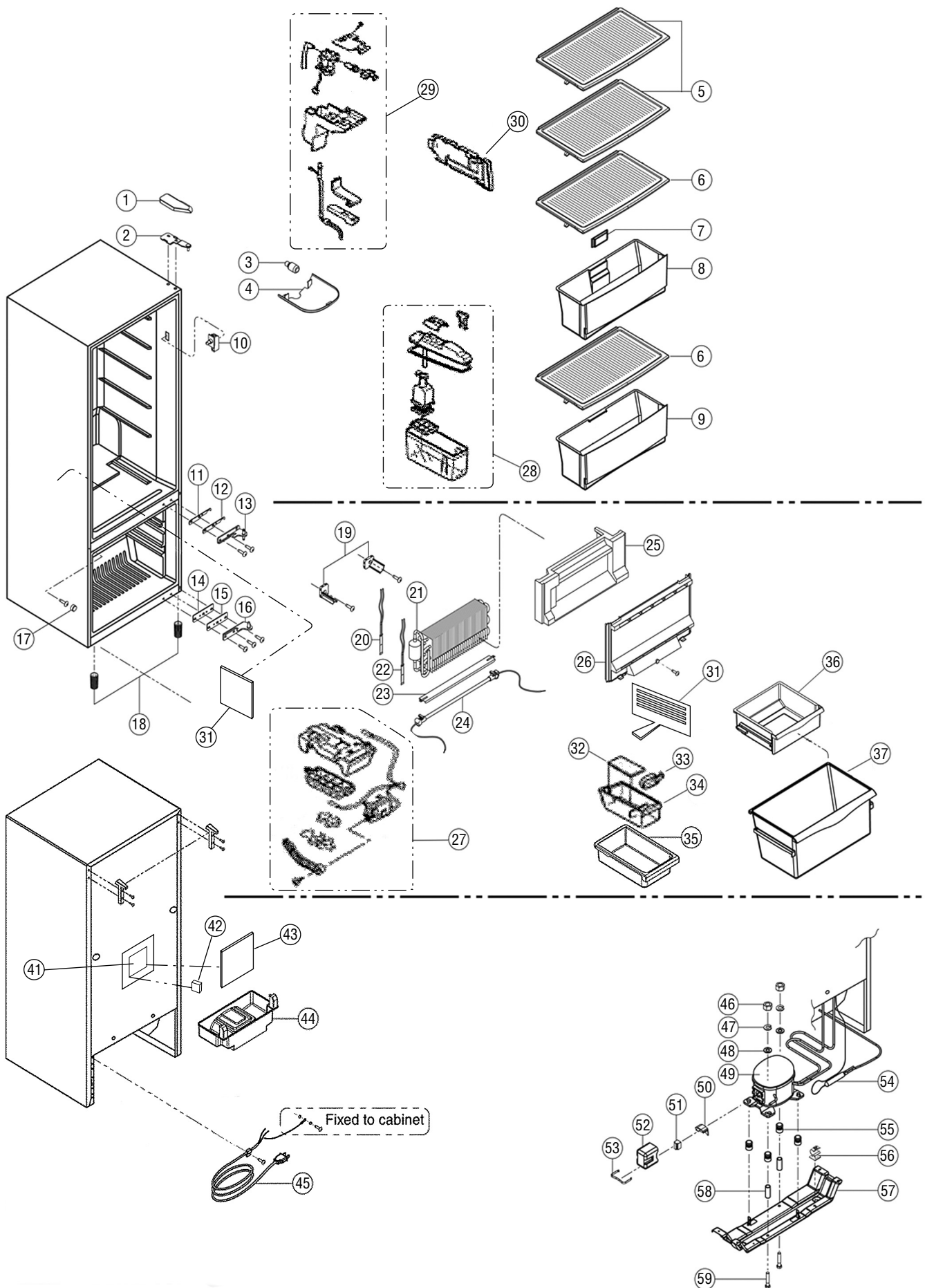
## 5.2. Parts List and Packing List of NR-B37M1, NR-B41M1, NR-B361M and NR-B401M

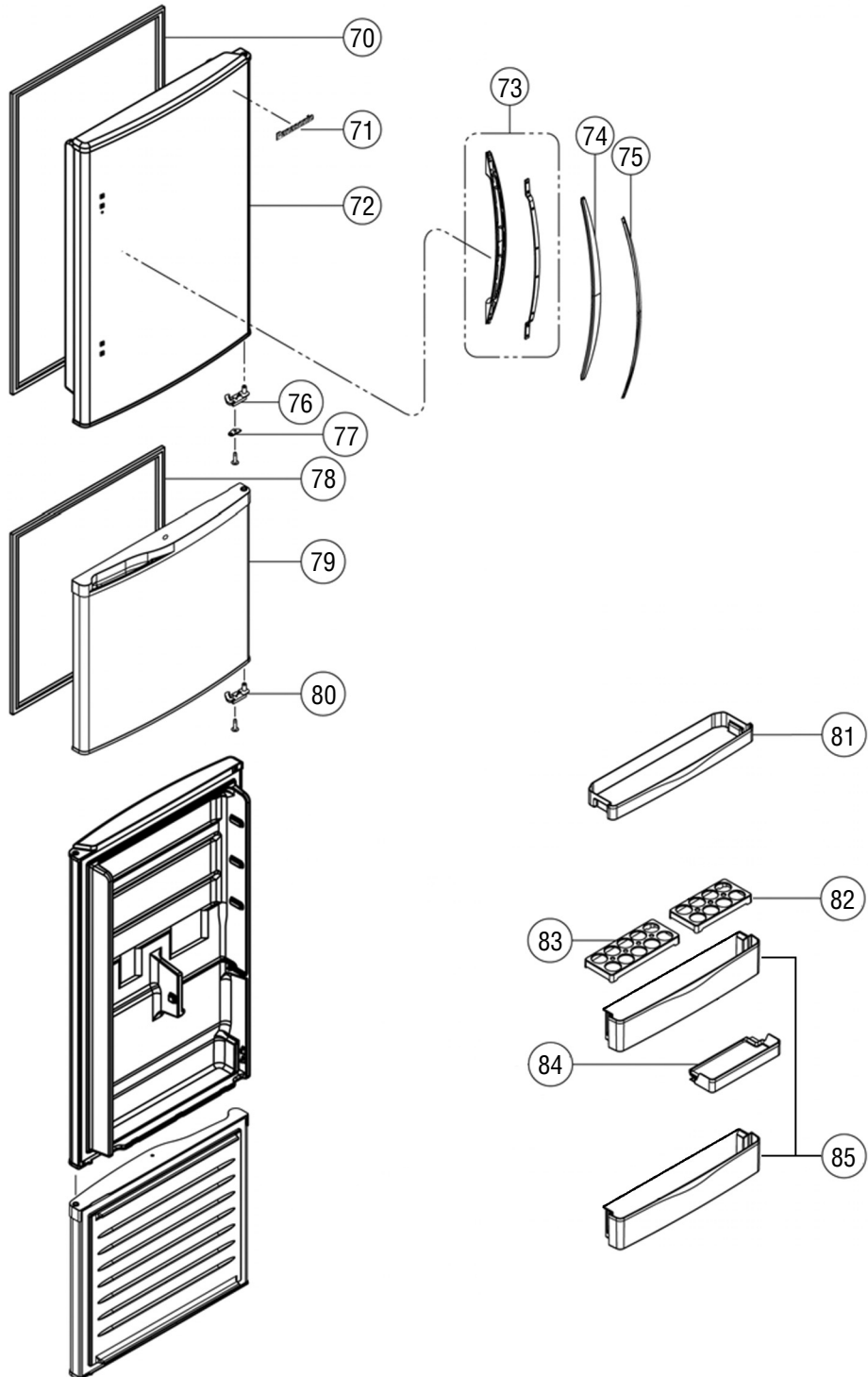
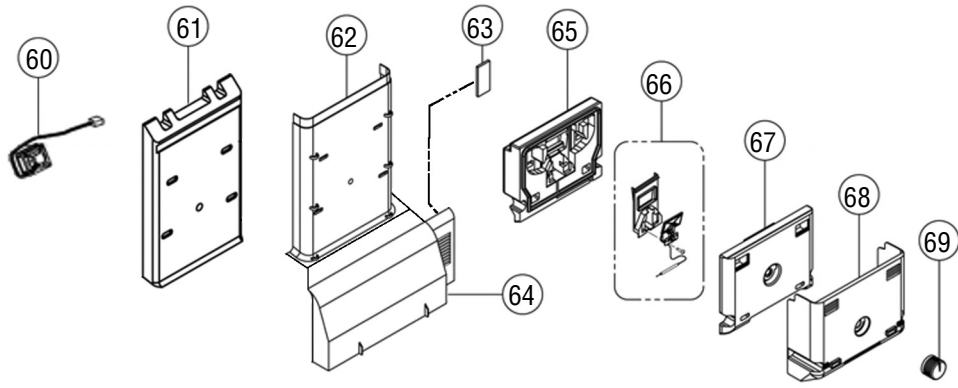
Ref. No.	Part Name & Description	Part Number	Qty/Model												
			NR-B37M1	NR-B41M1	NR-B361M					NR-B401M					
					C2P		L3P	S3P	S3P	C2P		L3P	S3P	B3P	
					S4	S8	W8	S6	S7	S8	W8	S6	S7	S3	
1	TOP HINGE COVER	CNR AE-135830	1	1	1	1					1				
		CNR AE-136110					1					1			
2	TOP HINGE	CNR AE-135820	1	1	1	1	1	1	1	1	1	1	1	1	1
3	BLUE LAMP15-240	CNR AG-155210	1	1	1	1	1	1	1	1	1	1	1	1	1
4	ROOM LAMP COVER	CNR AH-222721	1	1	1	1	1	1	1	1	1	1	1	1	1
5	GLASS TRAY TOP AS.	CNR BH-133381	2	2	2	2	2	2	2	2	2	2	2	2	2
6	GLASS TRAY AS.	CNR BH-133391	2	2	2	2	2	2	2	2	2	2	2	2	2
7	HERB CASSETTE AS.	CNR BH-126480	1	1	1	1	1	1	1	1	1	1	1	1	1
8	CRISPER	CNR AH-222557	1	1	1	1	1	1	1	1	1	1	1	1	1
9	MEAT TRAY	CNR AH-222824	1	1	1	1	1	1	1	1	1	1	1	1	1
10	DOOR SWITCH	CNR 01-454201	1	1	1										
		CNR AG-153290				1	1	1	1		1	1	1	1	1
11	BOTTOM HINGE SHIM(1.0)	CNR AJ-149730	2	2	2	2	2	2	2	2	2	2	2	2	2
12	CENTER HINGE SHIM FP 3.0 +	CNR AJ-149980	1	1	1	1	1	1	1	1	1	1	1	1	1
13	CENTER HINGE	CNR AE-135813	1	1	1	1	1	1	1	1	1	1	1	1	1
14	KEY STOPPER	CNR AE-134260				1	1	1			1	1			
15	BOTTOM HINGE SHIM(2.0) +	CNR AJ-149740	1	1	1	1	1	1	1	1	1	1	1	1	1
16	BOTTOM HINGE	CNR AE-135801	1	1	1	1	1	1	1	1	1	1	1	1	1
17	CAP PAN H.4TS(DE)	CNR 39-162680	3	3	3	3			3	3			3	3	3
	CAP PAN H.4TS(W)	CNR 39-162431					3				3				
18	ADJUSTER BOLT	CNR 38-992470	2	2	2	2	2	2	2	2	2	2	2	2	2
19	EVAPORATOR COIL SUPPORTER	CNR AF-163500	2	2	2	2	2	2	2	2	2	2	2	2	2
20	BIMETAL THERMOSTAT AS.	CNR BG-155711	1	1	1	1	1	1	1	1	1	1	1	1	1
21	EVAPORATOR COIL	CNR AF-167302	1	1	1	1	1	1	1	1	1	1	1	1	1
22	TEMPERATOR.FUSE AS.	CNR BG-122772	1	1	1	1	1	1	1	1	1	1	1	1	1
23	RADIANT HETER COVER	CNR AG-154970	1	1	1	1	1	1	1	1	1	1	1	1	1
24	DEFROST HEATER AS	CNR AG-154980	1	1	1	1	1	1	1	1	1	1	1	1	1
25	COIL COVER INSULATION F	CNR AF-167313	1	1	1	1	1	1	1	1	1	1	1	1	1
26	COIL COVER	CNR AF-167282	1	1	1	1	1	1	1	1	1	1	1	1	1
27	PVC TUBE 250	CNR AJ-148890	1	1	1	1	1	1	1	1	1	1	1	1	1
28	THERMOSTAT	CNR 39-650120	1	1	1	1	1	1	1	1	1	1	1	1	1
29	FC THERMOSTAT DIAL	CNR AH-229280	1	1	1	1	1	1	1	1	1	1	1	1	1
30	FC THERMOSTAT CASE	CNR AH-224881	1	1	1	1	1	1	1	1	1	1	1	1	1
33	HOLDER ICE TRAY	CNR AH-222816	1	1	1	1	1	1	1	1	1	1	1	1	1
34	ICE CUBE TRAY AS.	CNR BH-134310	1	1	1	1	1	1	1	1	1	1	1	1	1
	ICE CUBE TRAY	CNR AH-229300	2	2	2	2	2	2	2	2	2	2	2	2	2
	ICE CUBE TRAY SPRING	CNR AH-165720	2	2	2	2	2	2	2	2	2	2	2	2	2
	ICE CUBE FRAME	CNR AH-229310	1	1	1	1	1	1	1	1	1	1	1	1	1
35	ICE BOX	CNR AH-227460	1	1	1	1	1	1	1	1	1	1	1	1	1
36	FC TOP CASE	CNR AH-222586	1	1	1	1	1	1	1	1	1	1	1	1	1
37	SHELL HANGER	CNR AC-195770	2	2	2	2			2	2			2	2	2
		CNR AC-199840					2				2				
38	FC BOTTOM CASE	CNR AH-222547	1	1	1	1	1	1	1	1	1	1	1	1	1
39	WATER PAN EVA	CNR AF-161910	1	1	1	1	1	1	1	1	1	1	1	1	1
40	EARTH AS COMP.320	CNR BG-159020				1	1	1	1	1	1	1	1	1	1
41	CAPACITOR BOX	CNR AG-154000	1	1	1	1					1	1			
		CNR AG-144102							1	1			1	1	1
42	RUNNING CAPACITOR	CNR AG-153360	1	1	1	1	1	1	1	1	1	1	1	1	1
43	DEFROST TIMER	CNR AG-152960	1	1	1	1	1	1	1	1	1	1	1	1	1
44	CAPACITOR BOX COVER	CNR AG-131611	1	1	1	1	1	1	1	1	1	1	1	1	1
45	SERVICE CORD AS	CNR 39-490693	1	1											
	SUPPLY CORD AS.(3P)	CNR BG-162020							1	1			1	1	1
	SUPPLY CORD AS.(C2P)	CNR BG-150481			1	1	1				1	1			
46	HEXAGON NUT 8	CNR 38-8170A1	2	2	2	2	2	2	2	2	2	2	2	2	2
46	SPRING.WASHER 8	CNR 38-4270A0	2	2	2	2	2	2	2	2	2	2	2	2	2
48	WASHER 8	CNR 38-4170A0	2	2	2	2	2	2	2	2	2	2	2	2	2
49	COMPRESSOR DG77C14RAW5	CNR 91-155930	1	1	1	1	1	1	1	1	1	1	1	1	1
50	MOTOR PROTECTOR	CNR 06-597640	1	1	1	1	1	1	1	1	1	1	1	1	1
51	PTC RELAY	CNR 06-592700	1	1	1	1	1	1	1	1	1	1	1	1	1
52	PROTECTOR COVER	CNR 01-899533	1	1	1	1	1	1	1	1	1	1	1	1	1
53	PROTECTOR COVER CLAMP	CNR 01-245233	1	1	1	1	1	1	1	1	1	1	1	1	1
54	5 DRYER W	CNR 39-340920	1	1	1	1	1	1	1	1	1	1	1	1	1
55	RUBBER GROMMET	CNR 01-245970	4	4	4	4	4	4	4	4	4	4	4	4	4
56	CLAMPER DRYER	CNR 39-350252	1	1	1	1	1	1	1	1	1	1	1	1	1
57	REAR CROSSRAIL	CNR AF-167293	1	1	1	1			1	1			1	1	1
		CNR AF-169370					1				1				
58	COMPRESSOR SLEEVE	CNR AJ-112931	2	2	2	2	2	2	2	2	2	2	2	2	2
59	HEXAGON 8 BOLT 40	CNR 38-9924A0	2	2	2	2	2	2	2	2	2	2	2	2	2

Ref. No.	Part Name & Description	Part Number	Qty/Model													
			NR-B37M1	NR-B41M1	NR-B361M					NR-B401M						
					C2P		L3P	S3P	S3P	C2P		L3P	S3P	B3P		
					S4	S8	W8	S6	S7	S8	W8	S6	S7	S3		
60	FAN MOTOR FC	CNR AG-130231	1	1	1	1	1	1	1	1	1	1	1	1		
61	INSULATION. DUCT PC	CNR AH-222693		1							1	1	1	1	1	
		CNR AH-222874	1		1	1	1	1	1							
62	PLATE DUCT PC	CNR AH-223572		1							1	1	1	1	1	
		CNR AH-223582	1		1	1	1	1	1							
63	ESCUTCHEON BIO	CNR AJ-150011	1	1	1	1	1	1	1	1	1	1	1	1	1	
64	PLATE DUCT PCB	CNR AH-222562	1	1	1	1	1	1	1	1	1	1	1	1	1	
65	CONTROL PANEL PC B INSULATION	CNR AC-194852	1	1	1	1	1	1	1	1	1	1	1	1	1	
66	BAFFLE DAMPER THERMO AS	CNR BG-156000	1	1	1	1	1	1	1	1	1	1	1	1	1	
67	CONTROL PANEL PC F INSULATION	CNR AC-194862	1	1	1	1	1	1	1	1	1	1	1	1	1	
68	CONTROL PANEL	CNR AH-222594	1	1	1	1	1	1	1	1	1	1	1	1	1	
69	PC THERMOSTAT DIAL	CNR AH-227080	1	1	1	1	1	1	1	1	1	1	1	1	1	
70	PC GASKET DOOR	CNR AD-290831		1							1	1	1	1	1	
		CNR AD-290871	1		1	1	1	1	1							
71	EMBLEM	CNR AD-263002	1	1	1	1	1	1	1	1	1	1	1	1	1	
72	PC DOOR AS(FOAM)	CNR BD-291781		1							1		1	1	1	
		CNR BD-292361	1		1	1		1	1							
		CNR BD-300940										1				
		CNR BD-300950					1									
73	BASE HANDLE AS.	CNR BD-290302	1	1	1	1		1	1	1	1		1	1	1	
		CNR BD-296441					1					1				
74	HANDLE COVER	CNR AD-275192	1	1	1	1	1	1	1	1	1	1	1	1	1	
75	ESCUTCHEON HANDLE	CNR AD-291002	1	1	1	1	1	1	1	1	1	1	1	1	1	
76	PC DOOR LATCH	CNR AE-135841	1	1	1	1	1	1	1	1	1	1	1	1	1	
77	PC DOOR STOPPER	CNR AD-156580	1	1	1	1	1	1	1	1	1	1	1	1	1	
78	FC GASKET DOOR	CNR AD-290821	1	1	1	1	1	1	1	1	1	1	1	1	1	
79	FC DOOR AS(FOAM)	CNR BD-291750	1	1	1				1	1			1	1	1	
	FC DOOR AS(FOAM)-S(KEY)	CNR BD-301340				1					1					
	FC DOOR AS(FOAM)-W(KEY)	CNR BD-301350					1					1				
80	FC DOOR LATCH	CNR AD-156561	1	1	1	1	1	1	1	1	1	1	1	1	1	
81	EGG SHELF	CNR AD-290763	1	2	1	1	1	1	1	2	2	2	2	2	2	
82	EGG TRAY 8	CNR AD-156490	1	1	1	1	1	1	1	1	1	1	1	1	1	
83	EGG TRAY 10	CNR AD-269530	1	1	1	1	1	1	1	1	1	1	1	1	1	
84	TURN RACK	CNR AD-297030	1	1	1	1	1	1	1	1	1	1	1	1	1	
85	BOTTLE SHELF	CNR AD-290753	2	2	2	2	2	2	2	2	2	2	2	2	2	
86	KEY HANDLE(REGULATION)	CNR AE-116750				2	2				2	2				
87	ADAPTOR	CNR AG-155910			1	1	1	1	1	1	1	1	1	1	1	

Ref. No.	Part Name & Description	Part Number	Qty/Model													
			NR-B37M1	NR-B41M1	NR-B361M					NR-B401M						
					C2P		L3P	S3P	S3P	C2P		L3P	S3P	B3P		
					S4	S8	W8	S6	S7	S8	W8	S6	S7	S3		
CARTON BOX	CNR AK-132061	1														
	CNR AK-132051		1													
	CNR AK-133220			1												
	CNR AK-133550				1											
	CNR AK-133560					1										
	CNR AK-133840						1									
	CNR AK-132681								1							
	CNR AK-133830											1				
	CNR AK-132671												1			
	CNR AK-133250														1	
	CNR AK-133530										1					
CNR AK-133540											1					
PAPER PROTECTOR FRONT	CNR AK-133890	1		1	1	1	1	1	1							
	CNR AK-133900		1							1	1	1	1	1	1	
BOTTOM TRAY AS.	CNR BK-110050			1	1	1	1	1	1	1	1	1	1	1	1	
BOTTOM TRAY AS.	CNR BK-109211	1	1													
PLASTIC COVER	CNR AJ-150380	1	1	1	1	1	1	1	1	1	1	1	1	1	1	
TOP PAD L	CNR AK-132001	1	1	1	1	1	1	1	1	1	1	1	1	1	1	
TOP PAD R	CNR AK-132011	1	1	1	1	1	1	1	1	1	1	1	1	1	1	
INSTRUCTION BOOK	CNR AK-131890	1	1													
	CNR AK-133200			1												
	CNR AK-133520				1	1				1	1					
	CNR AK-132710							1				1		1		
	CNR AK-132720								1					1		

# 6 Parts Location and Parts list of NR-B37MA1 and NR-B41MA1





## 6.2. Parts List and Packing List of NR-B37MA1 and NR-B41MA1

Ref. No.	Part Name & Description	Part Number	Qty/Model	
			NR-B37MA1	NR-B41MA1
1	TOP HINGE COVER	CNR AE-135830	1	1
2	TOP HINGE	CNR AE-135820	1	1
3	BLUE LAMP15-240	CNR AG-155210	1	1
4	ROOM LAMP COVER	CNR AH-222721	1	1
5	GLASS TRAY TOP AS.	CNR BH-133381	2	2
6	GLASS TRAY AS.	CNR BH-133391	2	2
7	HERB CASSETTE AS.	CNR BH-126480	1	1
8	CRISPER	CNR AH-222557	1	1
9	MEAT TRAY	CNR AH-222574	1	1
10	DOOR SWITCH	CNR AG-153290	1	1
11	CENTER HINGE SHIM	CNR AJ-149730	1	1
12	CENTER HINGE SHIM FP 3.0 +	CNR AJ-148560	1	1
13	CENTER HINGE	CNR AE-135813	1	1
14	BOTTOM HINGE SHIM	CNR AJ-149740	1	1
15	BOTTOM HINGE SHIM	CNR AJ-149720	1	1
16	BOTTOM HINGE	CNR AE-135801	1	1
17	CAP PAN H.4TS(DE)	CNR 39-162680	3	3
18	ADJUSTER BOLT	CNR 38-992470	2	2
19	EVAPORATOR COIL SUPPORTER	CNR AF-163500	2	2
20	SENSOR DEFROST	CNR AG-150740	1	1
21	EVAPORATOR COIL	CNR AF-167302	1	1
22	TEMPERATOR.FUSE AS.	CNR BG-122772	1	1
23	RADIANT HETER COVER	CNR AG-154970	1	1
24	DEFROST HEATER AS	CNR AG-154980	1	1
25	COIL COVER INSULATION F	CNR AF-167313	1	1
26	COIL COVER	CNR AF-167282	1	1
27	ICE CORNER AS	CNR BH-133861	1	1
28	TANK AS	CNR BH-133360	1	1
29	COVER PLATE TANK T AS	CNR BH-133490	1	1
30	PLATE TANK SIDE	CNR AH-222702	1	1
31	BASE CONTROL AS	CNR BC-278541	1	1
32	ICE MAT	CNR AJ-149700	1	1
33	ICE SCOP	CNR AH-149282	1	1
34	CASE IC	CNR AH-222674	1	1
35	ICE BOX	CNR AH-222680	1	1
36	FC TOP CASE	CNR AH-222585	1	1
37	FC BOTTOM CASE	CNR AH-222547	1	1
41	PAS-B41MA1(CONTROL)	CNR BG-158820	1	1
42	RUNNING CAPACITOR	CNR AG-153360	1	1
43	COVER BOARD AS	CNR BC-279941	1	1
44	WATER PAN EVA	CNR AF-161910	1	1
45	SUPPLY CORD	CNR AG-155250	1	1
46	HEXAGON NUT 8	CNR 38-8170A1	2	2
46	SPRING.WASHER 8	CNR 38-4270A0	2	2
48	WASHER 8	CNR 38-4170A0	2	2
49	COMPRESSOR DG77C14RAW5	CNR 91-155930	1	1
50	MOTOR PROTECTOR	CNR 06-597640	1	1
51	PTC RELAY	CNR 06-592700	1	1
52	PROTECTOR COVER	CNR 01-899533	1	1
53	PROTECTOR COVER CLAMP	CNR 01-245233	1	1
54	5 DRYER W	CNR 39-340920	1	1
55	RUBBER GROMMET	CNR 01-245970	4	4
56	CLAMPER DRYER	CNR 39-350251	1	1
57	REAR CROSSRAIL	CNR AF-167293	1	1
58	COMPRESSOR SLEEVE	CNR AJ-112931	2	2
59	HEXAGON 8 BOLT 40	CNR 38-9924A0	2	2



Ref. No.	Part Name & Description	Part Number	Qty/Model	
			NR-B37MA1	NR-B41MA1
60	FAN MOTOR FC	CNR AG-130231	1	1
61	INSULATION. DUCT PC	CNR AH-222693		1
		CNR AH-222874	1	
62	PLATE DUCT PC	CNR AH-223572		1
		CNR AH-223582	1	
63	ESCUTCHEON BIO	CNR AJ-150011	1	1
64	PLATE DUCT PCB	CNR AH-222562	1	1
65	CONTROL PANEL PC B INSULATION	CNR AC-194852	1	1
66	BAFFLE DAMPER THERMO AS	CNR BG-156000	1	1
67	CONTROL PANEL PC F INSULATION	CNR AC-194862	1	1
68	CONTROL PANEL	CNR AH-222594	1	1
69	PC THERMOSTAT DIAL	CNR AH-227080	1	1
70	PC GASKET DOOR	CNR AD-290831		1
		CNR AD-290871	1	
71	EMBLEM	CNR AD-263002	1	1
72	PC DOOR AS(FOAM)	CNR BD-291781		1
		CNR BD-292361	1	
73	BASE HANDLE AS.	CNR BD-290302	1	1
74	HANDLE COVER	CNR AD-275192	1	1
75	ESCUTCHEON HANDLE	CNR AD-291002	1	1
76	PC DOOR LATCH	CNR AE-135841	1	1
77	PC DOOR STOPPER	CNR AD-156580	1	1
78	FC GASKET DOOR	CNR AD-290821	1	1
79	FC DOOR AS(FOAM)	CNR BD-291750	1	1
80	FC DOOR LATCH	CNR AD-156561	1	1
81	EGG SHELF	CNR AD-290763	1	2
82	EGG TRAY 8	CNR AD-156490	1	1
83	EGG TRAY 10	CNR AD-269530	1	1
84	TURN RACK	CNR AD-297030	1	1
85	BOTTLE SHELF	CNR AD-290753	2	2

Ref. No.	Part Name & Description	Part Number	Qty/Model	
			NR-B37MA1	NR-B41MA1
	CARTON BOX	CNR AK-131950	1	
		CNR AK-131941		1
	PAPER PROTECTOR FRONT	CNR AK-133890	1	
		CNR AK-133900		1
	BOTTOM TRAY AS.	CNR BK-110050	1	1
	PLASTIC COVER	CNR AJ-150380	1	1
	TOP PAD L	CNR AK-132001	1	1
	TOP PAD R	CNR AK-132011	1	1
	INSTRUCTION BOOK	CNR AK-131890	1	1

# 7 Packaging Location

